



Unloading roller conveyor

Single Head Cutting-Off Machines

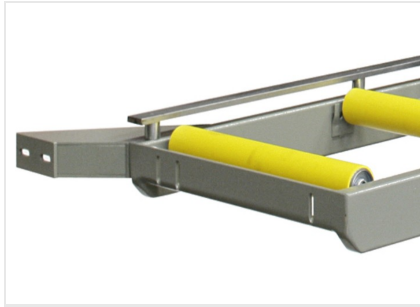


Tubular steel construction with adjustable mounting feet and PVC covered steel rolls. In the version with rolls size 240 mm, roller conveyor length is 3.500 mm; with rolls size 440 mm, roller conveyor length is 4.000 mm.



Stop

Carriage running on ball bushing actuated by mechanically controlled kinematics, which allows, referring to the centre of the blade, the realization of the length of the workpiece to be cut.



Side view

Through special steel bracket, the mechanical connection to the cutting machine is made precisely and rigidly.



Roller

PVC-coated steel rollers of 240/440 mm that allow the profile to slide effectively, preventing surface damage.

**UNLOADING ROLLER CONVEYOR / SINGLE HEAD CUTTING-OFF MACHINES****CHARACTERISTICS**

Maximum load capacity (according to model) - roller conveyor L=3500 mm, rollers L=240 mm (kg)	100
Maximum load capacity (according to model) - roller conveyor L=4000 mm, rollers L=440 mm (kg)	250

Included ● Available ○