

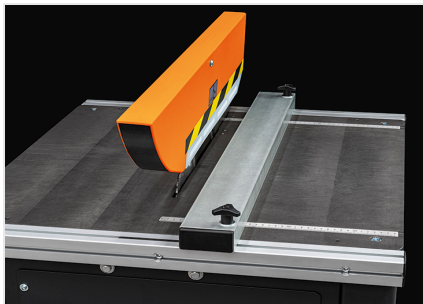


## ***TKE 335 R***

### Single Head Cutting-Off Machines



Single head rising blade trimming machine, for extruded profiles and flat sheets made of aluminium. The especially rugged structure allows very sharp and accurate cutting in order to obtain exactly parallel faces of the profiles. Furthermore the machine can be set-up with support roller conveyors to extend its versatility. The blade guard has been designed and developed to ensure working under the best possible conditions of safety.



### **Adjustable stop**

Referring to the centreline of the blade, it allows the area to be removed to be quickly defined.



### **Graduated scale**

It allows the height of the blade relative to the horizontal support surface to be mechanically fixed in relation to the thickness of the material to be sectioned.



### **Cutting zone**

The sturdy and wide horizontal cast-iron support surface makes up the work area, which features a large footprint that enables the processing of both profiles and flat aluminium sheets.

**TKE 335 R / SINGLE HEAD CUTTING-OFF MACHINES****BLADE**

Made of Widia (mm)

Ø = 350

**BLADE FEED**

Maximum trimming height (mm)

120

**CUTTING AREA PROTECTION**

Local, manually adjusted

**LUBRICATION SYSTEM**

Micro-mist lubrication system with water and oil emulsion

**MOTOR**

Three-phase brakemotor



Brake intervention time (s)

10

Power (kW)

1,5

Included ● Available ○