

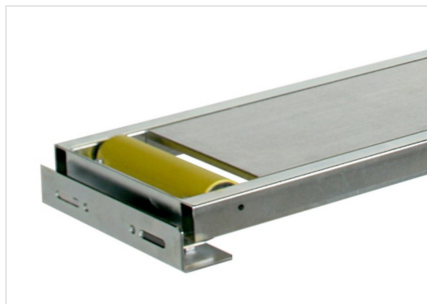


Loading roller conveyor

Single Head Cutting-Off Machines

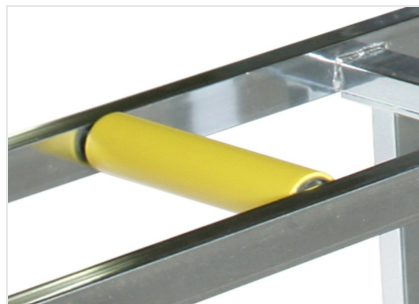


Structure in steel tubular con adjustable feet and PVC-coated steel rollers. 3.500 mm-long roller conveyors with 240 mm rollers, or 4.000 mm-long with 440 mm rollers. Unloading roller conveyors equipped with metric rod and measuring lock.



Side view

Through special steel bracket, the mechanical connection to the cutting machine is made precisely and rigidly.



Roller

PVC-coated steel rollers of 240/440 mm that allow the profile to slide effectively, preventing surface damage.

**LOADING ROLLER CONVEYOR / SINGLE HEAD CUTTING-OFF MACHINES****CHARACTERISTICS**

Maximum load capacity (according to model) - roller conveyor L=3500 mm, rollers L=240 mm (kg)	100
Maximum load capacity (according to model) - roller conveyor L=4000 mm, rollers L=440 mm (kg)	250

Included ● Available ○