



TKE 160 M

End milling machine



Horizontal end milling machine with manual feed. Mitre milling at 90°. Quick tool change with lever control. Scratch-proof work table. Full guarding or work zone.



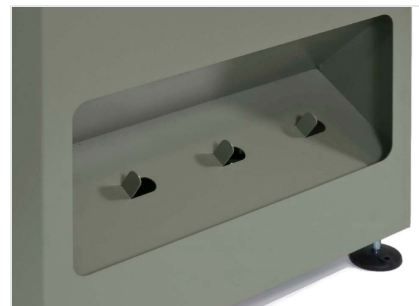
Quick tool change

Quick milling tool change, manually controlled by a lever.



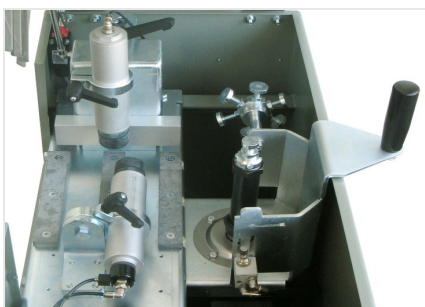
Positive indexing stop

The manual 6-position positive indexing stop enables 6 measurements to be set so that the workpiece can be positioned quickly, thus reducing the time of the work cycle. It is also possible to manually adjust the height of the positive indexing stop.



Tool magazine

The tool magazine is located in the machine base so the cutters can be placed in orderly positions, thus remaining in an intact state. Its lateral position makes the pick-up operation easier.



Vices

The machine is provided with a horizontal vice and a vertical vice, both operated pneumatically. The vices are manually adjustable and ensure correct gripping of the profile.



**TKE 160 M / END MILLING MACHINE****CHARACTERISTICS**

Brake motor (kW)	1,1
Tool speed (rpm)	2.800
Stroke (mm)	290
Vice capacity (mm)	190 x 110
Horizontal and vertical pneumatic vices, stroke (mm)	8
6-position positive indexing stop	●
Cutter holder sleeve (mm)	Ø = 27 / 32 x 135
Max mill (mm)	Ø = 140
Micro-mist lubrication system with water and oil emulsion	●
Base with mill holder magazine and swarf conveyor	●

Included ● Available ○