

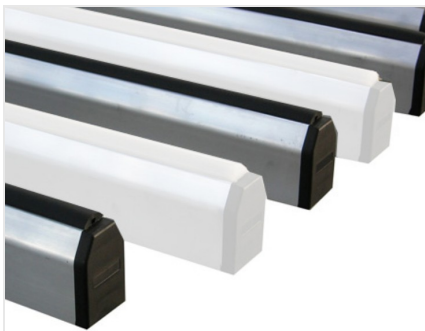


FIT

Manual Assembly Benches

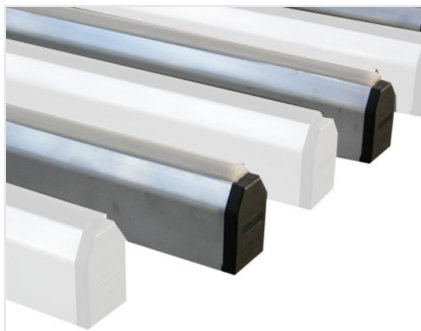


Banco per l'assemblaggio di ante e telai. Banco orizzontale con scambio pneumatico fra il piano di appoggio in PVC morbido (per la fase di assemblaggio) e il piano di appoggio in PVC duro antifrizione (per la fase di movimentazione). Il piano di lavoro è regolabile in altezza da 895 a 965 mm e i piedini sono provvisti di fori per il fissaggio in terra.



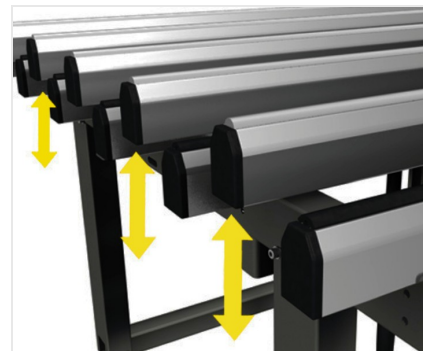
Surface in soft nonslip PVC

The working surfaces are covered with soft nonslip PVC that provides secure support when positioning the frame.



Support surface in hard anti-friction PVC

The anti-friction hard PVC support surface ensures great smoothness of the frame allowing easy handling.



Pneumatic bench exchange

A pneumatic cylinder system operates the pneumatic exchange ensuring that the hard PVC support surface rises with respect to the soft PVC support surface.



Adjustable feet

Height adjustable feet to ensure the work bench can be positioned at the required height and perfectly flush with the other products in the Dynamic Line. The feet also have holes so they can be anchored to the floor.





FIT / MANUAL ASSEMBLY BENCHES

CHARACTERISTICS

Length (based on model) (mm)	1.400 ; 2.000 ; 2.500 ; 3.000
Width (mm)	1.600
Roller bench	<input type="radio"/>
Pneumatic lifting for glass	<input type="radio"/>
Air consumption (NI/cycle)	0,5
Load capacity (kg)	240

WEIGHT (DEPENDING ON MODEL)

FIT 1,600 X 1,400 mm (kg)	87
FIT 1,600 X 2,000 mm (kg)	96
FIT 1,600 X 2,500 mm (kg)	105
FIT 1,600 X 3,000 mm (kg)	115

Included ● Available ○